

NOTE: RECOMMENDED MARKERBOARD MOUNTING HEIGHTS
 1) 2'4" FROM FLOOR FOR K-4th GRADE*
 2) 2'8" FROM FLOOR FOR 5th & 6th GRADE*
 3) 2'10" FROM FLOOR FOR 7th & 8th GRADE*
 4) 3'0" FROM FLOOR FOR HIGH SCHOOL*
 *(UNLESS OTHERWISE SPECIFIED BY ARCHITECT)

MARKERBOARD
 ELEVATION
 $\frac{3}{8}'' = 1'-0''$

BOARD CONSTRUCTION TYPE:
 MAGNETIC
 NON-MAGNETIC
 CORK (TRAY NOT INCLUDED)

WOOD FRAMED BOARD SIZES
 FOR NARROW (1 1/4") FRAME STYLE

SIZE	BOARD MAKE-UP
1.5' x 2'	CONSISTS OF ONE 2' BOARD
2' x 2'	CONSISTS OF ONE 2' BOARD
2' x 3'	CONSISTS OF ONE 3' BOARD
2' x 4'	CONSISTS OF ONE 4' BOARD
3' x 4'	CONSISTS OF ONE 4' BOARD
4' x 4'	CONSISTS OF ONE 4' BOARD
4' x 6'	CONSISTS OF ONE 6' BOARD

IMPORTANT NOTICE
 FIELD VERIFY ALL DIMENSIONS AND
 LOCATIONS PRIOR TO MANUFACTURING

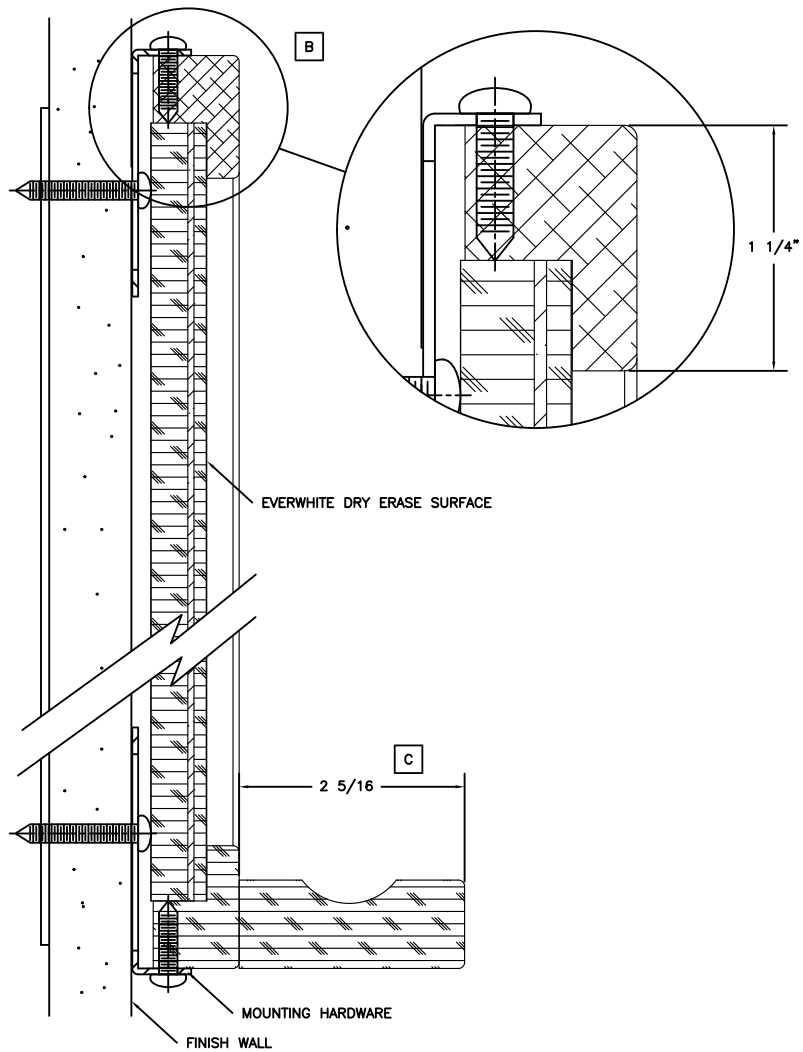
QTY	SIZE	TYPE	LOCATION	ADDITIONAL COMMENTS

BOARD SCHEDULE



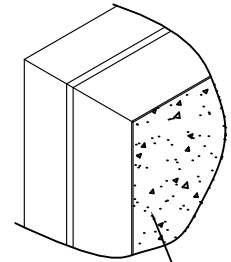
184 RAILROAD DRIVE
 WARMINSTER, PA 18974
 PH (800) 335-7319
 FX (215) 323-4135

CUSTOMER SERVICE AND
 SUPPORT (800) 335-7319
 WWW.EVERWHITEBOARDS.COM
 MADE IN THE USA

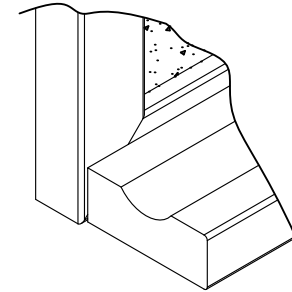


VERTICAL SECTIONS

DETAIL VIEWS NOT TO SCALE

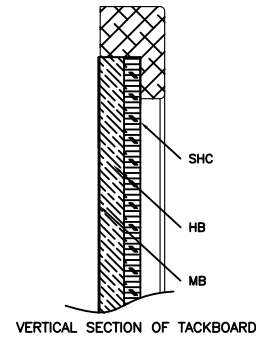


EVERWHITE SURFACE
SAFETY FEATURE
MITERED WOOD CORNERS

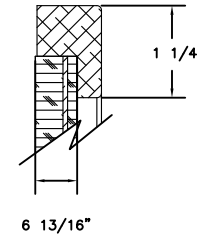


MATCHING WOOD CHALK TRAY

D



VERTICAL SECTION OF TACKBOARD



6 13/16"

B

QTY	PART NUMBER / DESCRIPTION	ADDITIONAL COMMENTS

ACCESSORIES SCHEDULE

EVERWHITE COMBINATION BOARDS

- STANDARD SIZES UP TO 4' X 4' WITH VIRTUALLY UNLIMITED CUSTOM SIZES AVAILABLE
- AVAILABLE WITH SELF-HEALING CORK OR VINYL IN MULTIPLE CONFIGURATIONS
- AVAILABLE WITH CUSTOM GRAPHICS IN MULTIPLE CONFIGURATIONS

100% SOLID WOOD FRAME IN OAK OR MAPLE

- STANDARD FINISH OPTIONS:
 - OAK
 - MAPLE
 - STAINED CHERRY
 - STAINED MAHOGANY
 - PAINTED BLACK
- CUSTOM STAIN OPTIONS AVAILABLE UPON REQUEST

EVERWHITE MARKERBOARD

FACE/CORE/BACKING

MAGNETIC

- 01 EWS / 24GS / 1/2" HEX / MB

NON-MAGNETIC

- 02 EWS / 1/8" HB / 3/8" HEX / MB

- EWS - EVERWHITE SURFACE
- MB - MOISTURE BARRIER SHEET
- HB - HARD BOARD
- HEX - HEXACOMB
- 24GS - 24 GA. GALVANIZED STEEL

CORK TACKBOARDS

FACE/CORE/BACKING

- 01 1/4" SHC / 1/4" HB / MB

- SHC - SELF-HEALING CORK
- HB - HARD BOARD
- MB - MOISTURE BARRIER SHEET

NOTE:
CORK BOARDS DO NOT INCLUDE TRAY



184 RAILROAD DRIVE
WARMINSTER, PA 18974
PH (800) 335-7319
FX (215) 323-4135

CUSTOMER SERVICE AND
SUPPORT (800) 335-7319
WWW.EVERWHITEBOARDS.COM
MADE IN THE USA