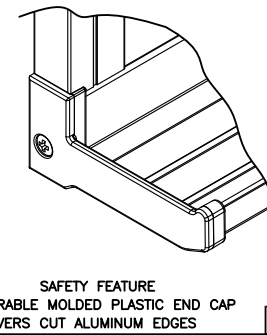
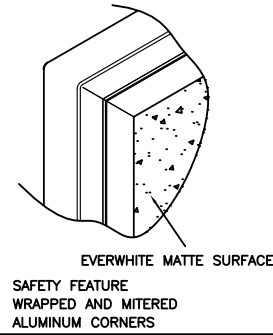
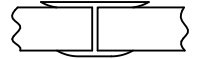


VERTICAL SECTIONS

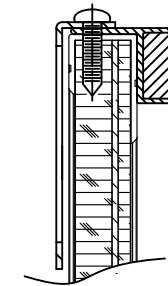
DETAIL VIEWS NOT TO SCALE



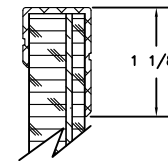
SATIN ANODIZED FLAT H-BAR DIVIDER
FOR JOINTS WITH CORK & MARKER
COMBINATION BOARDS OVER 12'0" WIDE



DRY ERASE RESISTANT PAINTED H-BAR
DIVIDER FOR JOINTS BETWEEN
MARKERBOARDS OVER 12'0" WIDE

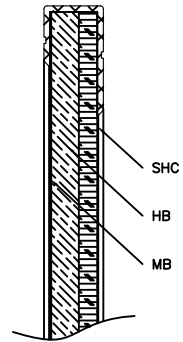


1 1/2" MAPRAIL WITH INSERT



D

B



VERTICAL SECTION OF TACKBOARD

QTY	PART NUMBER / DESCRIPTION	ADDITIONAL COMMENTS

ACCESSORIES SCHEDULE

EVERWHITE COMBINATION BOARDS

- STANDARD SIZES UP TO 5' X 24' WITH VIRTUALLY UNLIMITED CUSTOM SIZES AVAILABLE
- AVAILABLE WITH SELF-HEALING CORK OR VINYL IN MULTIPLE CONFIGURATIONS
- AVAILABLE WITH CUSTOM GRAPHICS IN MULTIPLE CONFIGURATIONS

NOTE:

ALL ALUMINUM IS
6063 ALLOY T-5 TEMPER
COMMERCIAL SATIN ANODIZED CLEAR FINISH
MIN. MAT'L THICKNESS .062"

EVERWHITE MARKERBOARD
FACE/CORE/BACKING

MAGNETIC

01 EWMS / 24GS / 1/2" HEX / MB

NON-MAGNETIC

02 EWMS / 1/8" HB / 3/8" HEX / MB

EWMS - EVERWHITE MATTE SURFACE
MB - MOISTURE BARRIER SHEET
HB - HARD BOARD
HEX - HEXACOMB
24GS - 24 GA. GALVANIZED STEEL

CORK TACKBOARDS
FACE/CORE/BACKING

01 1/4" SHC / 1/4" HB / MB

SHC - SELF-HEALING CORK
HB - HARD BOARD
MB - MOISTURE BARRIER SHEET

NOTE:
CORK BOARDS DO NOT INCLUDE TRAY



1480 INDEPENDENCE AVENUE
HARTFORD, WI 53027
PH (800) 335-7319
FX (262) 250-7176

CUSTOMER SERVICE AND
SUPPORT (800) 335-7319
WWW.EVERWHITEBOARDS.COM
MADE IN THE USA