

NOTE: RECOMMENDED MARKERBOARD MOUNTING HEIGHTS

- A) 2'4" FROM FLOOR FOR K-4th GRADE*
- B) 2'8" FROM FLOOR FOR 5th & 6th GRADE*
- C) 2'10" FROM FLOOR FOR 7th & 8th GRADE*
- D) 3'0" FROM FLOOR FOR HIGH SCHOOL*

*(UNLESS OTHERWISE SPECIFIED BY ARCHITECT)

MARKERBOARD ELEVATION

$3/8" = 1'-0"$

ALUMINUM FRAMED BOARD SIZES FOR BOTH WIDE (1 1/8") & NARROW (3/8") FRAME STYLE

SIZE BOARD MAKE-UP

- 1' x 1' CONSISTS OF ONE 1' BOARD
- 1.5' x 2' CONSISTS OF ONE 2' BOARD
- 2' x 2' CONSISTS OF ONE 2' BOARD
- 2' x 3' CONSISTS OF ONE 3' BOARD
- 2' x 4' CONSISTS OF ONE 4' BOARD
- 3' x 4' CONSISTS OF ONE 4' BOARD
- 4' x 4' CONSISTS OF ONE 4' BOARD
- 4' x 5' CONSISTS OF ONE 5' BOARD
- 4' x 6' CONSISTS OF ONE 6' BOARD
- 4' x 8' CONSISTS OF ONE 8' BOARD
- 4' x 10' CONSISTS OF ONE 10' BOARD
- 4' x 12' CONSISTS OF ONE 12' BOARD
- 4' x 16' CONSISTS OF TWO 8' BOARDS WITH H-CHANNEL
- 4' x 20' CONSISTS OF TWO 10' BOARDS WITH H-CHANNEL
- 4' x 24' CONSISTS OF TWO 12' BOARDS WITH H-CHANNEL

IMPORTANT NOTICE

FIELD VERIFY ALL DIMENSIONS AND LOCATIONS PRIOR TO MANUFACTURING

BOARD CONSTRUCTION TYPE:

- MAGNETIC
- NON-MAGNETIC
- CORK (TRAY NOT INCLUDED)

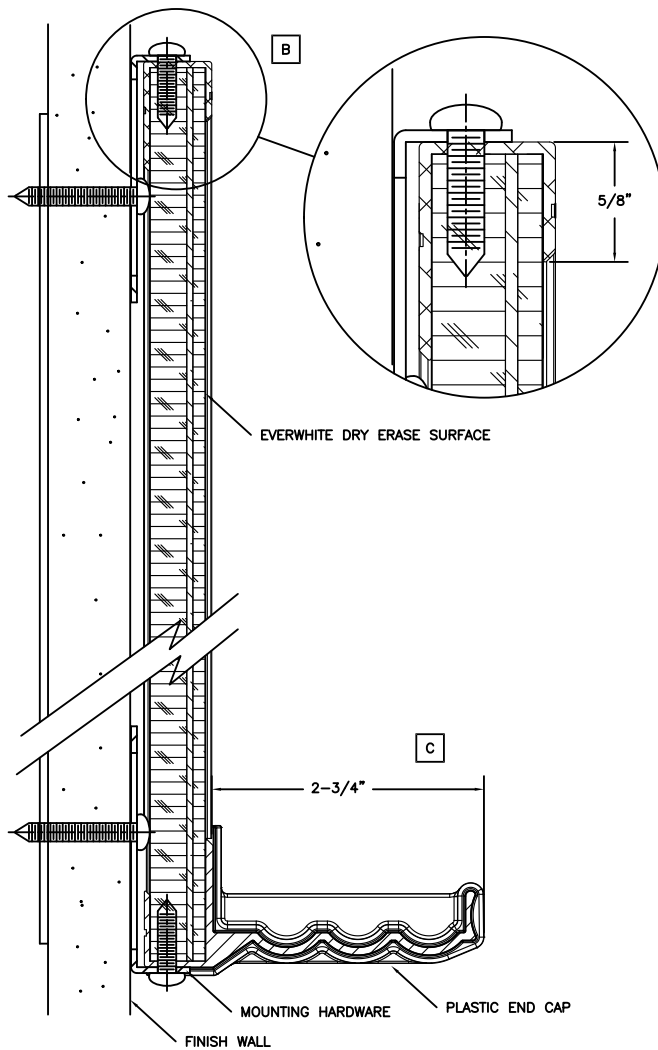
QTY	SIZE	TYPE	LOCATION	ADDITIONAL COMMENTS

BOARD SCHEDULE



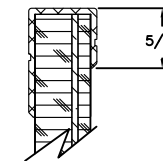
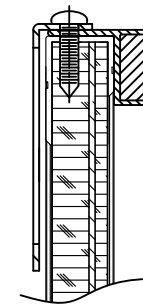
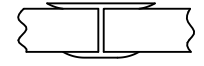
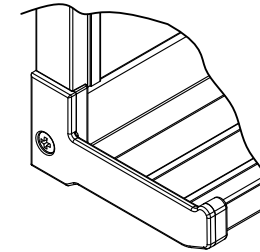
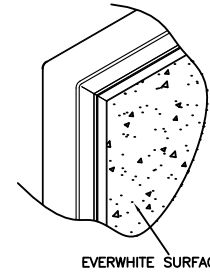
1480 INDEPENDENCE AVENUE
 HARTFORD, WI 53027
 PH (800) 1335-739
 FX (262) 250-7176

CUSTOMER SERVICE AND SUPPORT (800) 1335-739
 WWW.EVERWHITEBOARDS.COM
 MADE IN THE USA



VERTICAL SECTIONS

DETAIL VIEWS NOT TO SCALE



QTY	PART NUMBER / DESCRIPTION	ADDITIONAL COMMENTS

ACCESSORIES SCHEDULE

EVERWHITE COMBINATION BOARDS

- STANDARD SIZES UP TO 4' X 24' WITH VIRTUALLY UNLIMITED CUSTOM SIZES AVAILABLE
- AVAILABLE WITH SELF-HEALING CORK OR VINYL IN MULTIPLE CONFIGURATIONS
- AVAILABLE WITH CUSTOM GRAPHICS IN MULTIPLE CONFIGURATIONS

NOTE:
ALL ALUMINUM IS
6063 ALLOY T-5 TEMPER
COMMERCIAL SATIN ANODIZED CLEAR FINISH
MIN. MAT'L THICKNESS .062"

EVERWHITE MARKERBOARD
FACE/CORE/BACKING

- MAGNETIC
- 01 EWS / 24GS / 1/2" HEX / MB
- NON-MAGNETIC
- 02 EWS / 1/8" HB / 3/8" HEX / MB
- EWS - EVERWHITE SURFACE
MB - MOISTURE BARRIER SHEET
HB - HARD BOARD
HEX - HEXACOMB
24GS - 24 GA. GALVANIZED STEEL

CORK TACKBOARDS
FACE/CORE/BACKING

- 01 1/4" SHC / 1/4" HB / MB
- SHC - SELF-HEALING CORK
HB - HARD BOARD
MB - MOISTURE BARRIER SHEET
- NOTE:
CORK BOARDS DO NOT INCLUDE TRAY



1480 INDEPENDENCE AVENUE
HARTFORD, WI 53027
PH (800) 335-7319
FX (262) 250-7176

CUSTOMER SERVICE AND
SUPPORT (800) 335-7319
WWW.EVERWHITEBOARDS.COM
MADE IN THE USA