

NOTE: RECOMMENDED MARKERBOARD MOUNTING HEIGHTS  
 A) 2'4" FROM FLOOR FOR K-4th GRADE\*  
 B) 2'8" FROM FLOOR FOR 5th & 6th GRADE\*  
 C) 2'10" FROM FLOOR FOR 7th & 8th GRADE\*  
 D) 3'0" FROM FLOOR FOR HIGH SCHOOL\*  
 \*(UNLESS OTHERWISE SPECIFIED BY ARCHITECT)

MARKERBOARD ELEVATION  
 $3/8" = 1'-0"$

BOARD CONSTRUCTION TYPE:  
 MAGNETIC  
 NON-MAGNETIC  
 CORK (TRAY NOT INCLUDED)

IMPORTANT NOTICE

FIELD VERIFY ALL DIMENSIONS AND LOCATIONS PRIOR TO MANUFACTURING

ALUMINUM FRAMED BOARD SIZES FOR BOTH WIDE (1 1/8") & NARROW (3/8") FRAME STYLE

SIZE	BOARD MAKE-UP
4' x 4'	CONSISTS OF ONE 4' BOARD
4' x 5'	CONSISTS OF ONE 5' BOARD
4' x 6'	CONSISTS OF ONE 6' BOARD
4' x 8'	CONSISTS OF ONE 8' BOARD
4' x 10'	CONSISTS OF ONE 10' BOARD
4' x 12'	CONSISTS OF ONE 12' BOARD
4' x 16'	CONSISTS OF TWO 8' BOARDS WITH H-CHANNEL OR SEAM STRIP
4' x 20'	CONSISTS OF TWO 10' BOARDS WITH H-CHANNEL OR SEAM STRIP
4' x 24'	CONSISTS OF TWO 12' BOARDS WITH H-CHANNEL OR SEAM STRIP

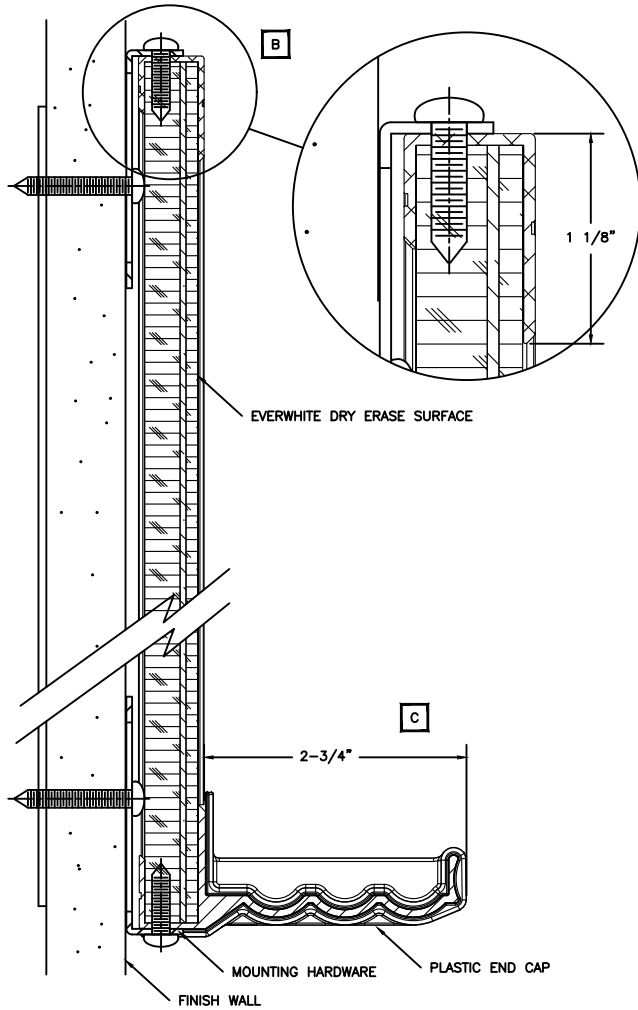
QTY	SIZE	TYPE	LOCATION	ADDITIONAL COMMENTS

BOARD SCHEDULE



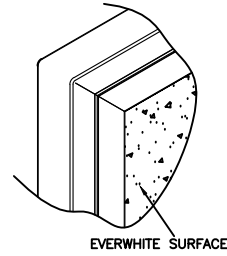
W158 N9332 NOR-X-WAY AVENUE  
 MENOMONEE FALLS, WI 53051  
 PH (800) 335-7319  
 FX (262) 250-7176

CUSTOMER SERVICE AND SUPPORT (800) 335-7319  
 WWW.EVERWHITEBOARDS.COM  
 MADE IN THE USA

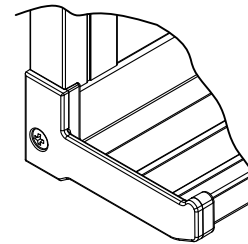


VERTICAL SECTIONS

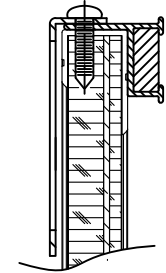
DETAIL VIEWS NOT TO SCALE



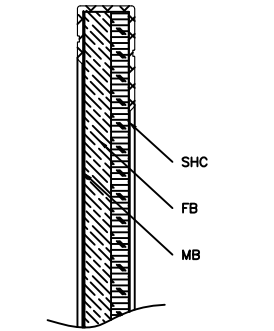
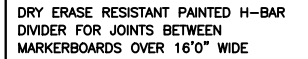
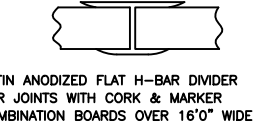
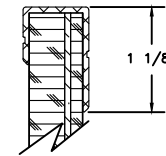
SAFETY FEATURE WRAPPED AND MITERED ALUMINUM CORNERS



SAFETY FEATURE DURABLE MOLDED PLASTIC END CAP COVERS CUT ALUMINUM EDGES



1 1/2" MAPRAIL WITH INSERT



VERTICAL SECTION OF TACKBOARD

QTY	PART NUMBER / DESCRIPTION	ADDITIONAL COMMENTS

ACCESSORIES SCHEDULE

**EVERWHITE COMBINATION BOARDS**

- STANDARD SIZES UP TO 4' X 24' WITH VIRTUALLY UNLIMITED CUSTOM SIZES AVAILABLE
- AVAILABLE WITH SELF-HEALING CORK OR VINYL IN MULTIPLE CONFIGURATIONS
- AVAILABLE WITH CUSTOM GRAPHICS IN MULTIPLE CONFIGURATIONS

NOTE:  
ALL ALUMINUM IS  
6063 ALLOY T-5 TEMPER  
COMMERCIAL SATIN ANODIZED CLEAR FINISH  
MIN. MAT'L THICKNESS .062"

**EVERWHITE MARKERBOARD  
FACE/CORE/BACKING**

**MAGNETIC**

- 01 EWS / 24GS / 1/2" FB / MB

**NON-MAGNETIC**

- 02 EWS / 1/8" HB / 3/8" FB / MB

EWS - EVERWHITE SURFACE  
MB - MOISTURE BARRIER SHEET  
HB - HARD BOARD  
FB - FIBER BOARD  
24GS - 24 GA. GALVANIZED STEEL

**CORK TACKBOARDS  
FACE/CORE/BACKING**

- 01 1/4" SHC / 3/8" FB / MB

SHC - SELF-HEALING CORK  
FB - FIBER BOARD  
MB - MOISTURE BARRIER SHEET

NOTE:  
CORK BOARDS DO NOT INCLUDE TRAY



W158 N9332 NOR-X-WAY AVENUE  
MENOMONEE FALLS, WI 53051  
PH (800) 335-7319  
FX (262) 250-7176

CUSTOMER SERVICE AND  
SUPPORT (800) 335-7319  
WWW.EVERWHITEBOARDS.COM  
MADE IN THE USA