

NOTE: RECOMMENDED MARKERBOARD MOUNTING HEIGHTS

- A) 2'4" FROM FLOOR FOR K-4th GRADE*
 - B) 2'8" FROM FLOOR FOR 5th & 6th GRADE*
 - C) 2'10" FROM FLOOR FOR 7th & 8th GRADE*
 - D) 3'0" FROM FLOOR FOR HIGH SCHOOL*
- *(UNLESS OTHERWISE SPECIFIED BY ARCHITECT)

MARKERBOARD ELEVATION

$3/8" = 1'-0"$

IMPORTANT NOTICE

FIELD VERIFY ALL DIMENSIONS AND LOCATIONS PRIOR TO MANUFACTURING

- BOARD CONSTRUCTION TYPE:**
- MAGNETIC
 - NON-MAGNETIC
 - CORK (TRAY NOT INCLUDED)

ALUMINUM FRAMED BOARD SIZES FOR BOTH WIDE (1 1/8") & NARROW (3/8") FRAME STYLE

SIZE	BOARD MAKE-UP
4' x 4'	CONSISTS OF ONE 4' BOARD
4' x 5'	CONSISTS OF ONE 5' BOARD
4' x 6'	CONSISTS OF ONE 6' BOARD
4' x 8'	CONSISTS OF ONE 8' BOARD
4' x 10'	CONSISTS OF ONE 10' BOARD
4' x 12'	CONSISTS OF ONE 12' BOARD
4' x 16'	CONSISTS OF TWO 8' BOARDS WITH H-CHANNEL OR SEAM STRIP
4' x 20'	CONSISTS OF TWO 10' BOARDS WITH H-CHANNEL OR SEAM STRIP
4' x 24'	CONSISTS OF TWO 12' BOARDS WITH H-CHANNEL OR SEAM STRIP

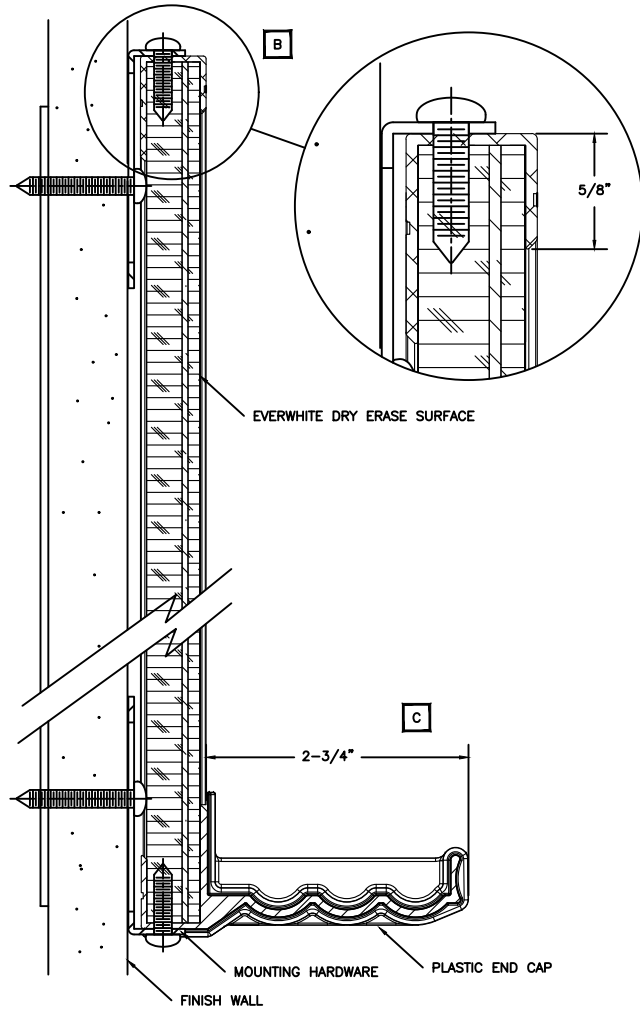
QTY	SIZE	TYPE	LOCATION	ADDITIONAL COMMENTS

BOARD SCHEDULE



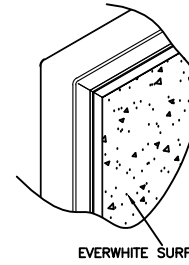
W158 N9332 NOR-X-WAY AVENUE
 MENOMONEE FALLS, WI 53051
 PH (800) 335-7319
 FX (262) 250-7176

CUSTOMER SERVICE AND SUPPORT (800) 824-1482
 WWW.EVERWHITEBOARDS.COM
 MADE IN THE USA

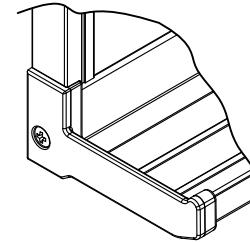


VERTICAL SECTIONS

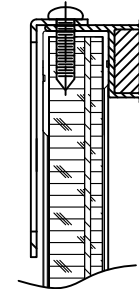
DETAIL VIEWS NOT TO SCALE



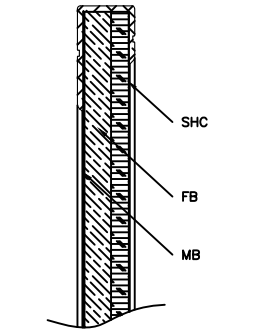
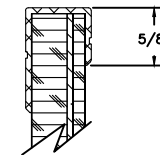
SAFETY FEATURE
WRAPPED AND MITERED
ALUMINUM CORNERS



SAFETY FEATURE
DURABLE MOLDED PLASTIC END CAP
COVERS CUT ALUMINUM EDGES



MAPRAIL WITH INSERT



VERTICAL SECTION OF TACKBOARD

SATIN ANODIZED FLAT H-BAR DIVIDER
FOR JOINTS WITH CORK & MARKER
COMBINATION BOARDS OVER 16'0" WIDE

DRY ERASE RESISTANT PAINTED H-BAR
DIVIDER FOR JOINTS BETWEEN
MARKERBOARDS OVER 16'0" WIDE

QTY	PART NUMBER / DESCRIPTION	ADDITIONAL COMMENTS

ACCESSORIES SCHEDULE

EVERWHITE COMBINATION BOARDS

- STANDARD SIZES UP TO 4' X 24' WITH VIRTUALLY UNLIMITED CUSTOM SIZES AVAILABLE
- AVAILABLE WITH SELF-HEALING CORK OR VINYL IN MULTIPLE CONFIGURATIONS
- AVAILABLE WITH CUSTOM GRAPHICS IN MULTIPLE CONFIGURATIONS

NOTE:

ALL ALUMINUM IS
6063 ALLOY T-5 TEMPER
COMMERCIAL SATIN ANODIZED CLEAR FINISH
MIN. MAT'L THICKNESS .062"

EVERWHITE MARKERBOARD
FACE/CORE/BACKING

MAGNETIC

☐ 01 EWS / 24GS / 1/2" FB / MB

NON-MAGNETIC

☐ 02 EWS / 1/8" HB / 3/8" FB / MB

EWS - EVERWHITE SURFACE
MB - MOISTURE BARRIER SHEET
HB - HARD BOARD
FB - FIBER BOARD
24GS - 24 GA. GALVANIZED STEEL

CORK TACKBOARDS
FACE/CORE/BACKING

☐ 01 1/4" SHC / 3/8" FB / MB

SHC - SELF-HEALING CORK
FB - FIBER BOARD
MB - MOISTURE BARRIER SHEET

NOTE:
CORK BOARDS DO NOT INCLUDE TRAY

NARROW ALUMINUM FRAME PAGE 2 OF 2



W158 N9332 NOR-X-WAY AVENUE
MENOMONEE FALLS, WI 53051
PH (800) 335-7319
FX (262) 250-7176

CUSTOMER SERVICE AND
SUPPORT (800) 335-7319
WWW.EVERWHITEBOARDS.COM
MADE IN THE USA